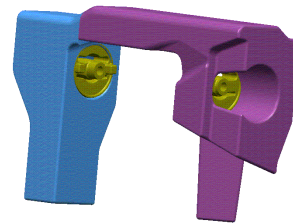




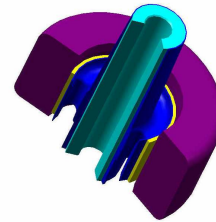
## Dynamic Absorbers

---

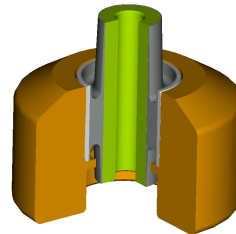
- Cost competitive design
  - Simple bushing => more cavities per mould
  - Simple tooling



- Rapid Introduction
  - Simple tooling => reduced leadtimes
  - Typical Production leadtime 10 weeks
  - Prototype process is identical to production



- Integral Fail-safe
  - Internal stop integral to mass



- Applications
  - High and low temperature, chassis and power-train.

