



DTR VMS

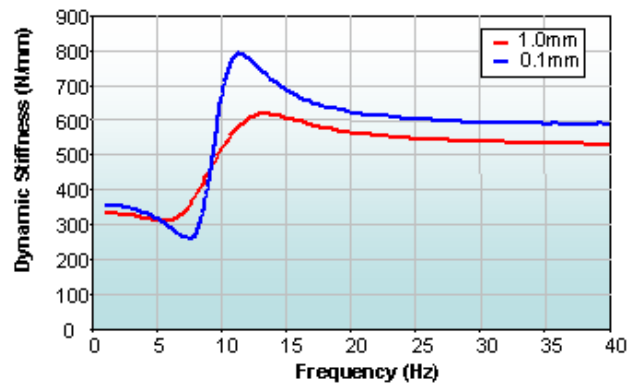
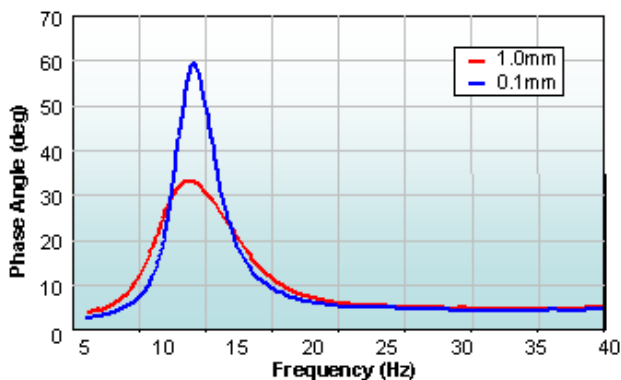
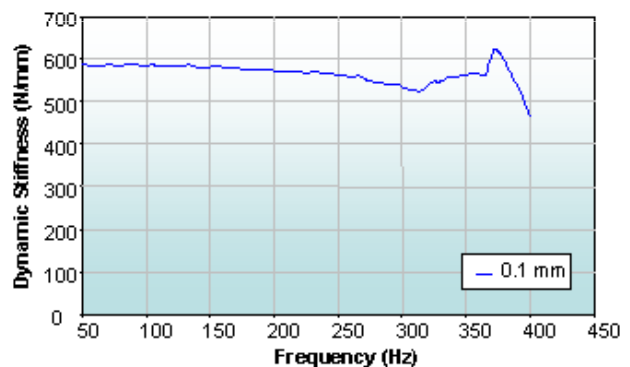
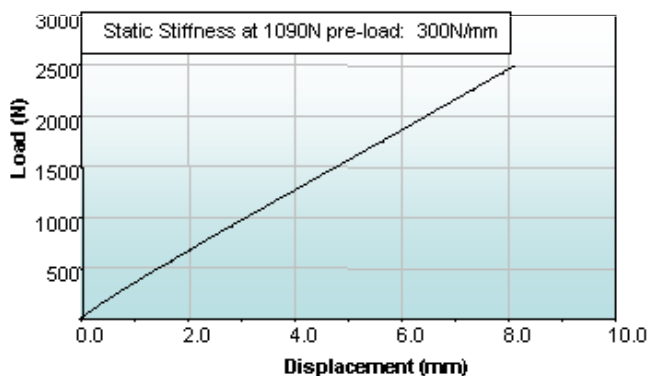
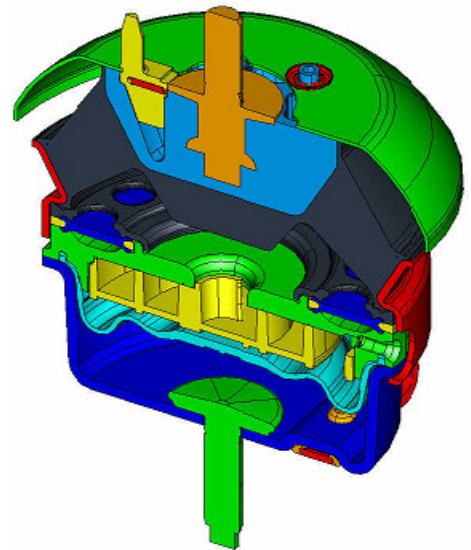
Hydraulic Engine Mount – medium stiffness range with airspring.

Passive hydraulic engine mount for in-line or transverse engine applications.

Static Stiffness Range:
200 – 450 N/mm

Applications:
Petrol or Diesel engines

Loss Angle tuning range:
5 – 15Hz



DTR VMS Limited
Formerly Avon Automotive VMS

www.dtrvms.com